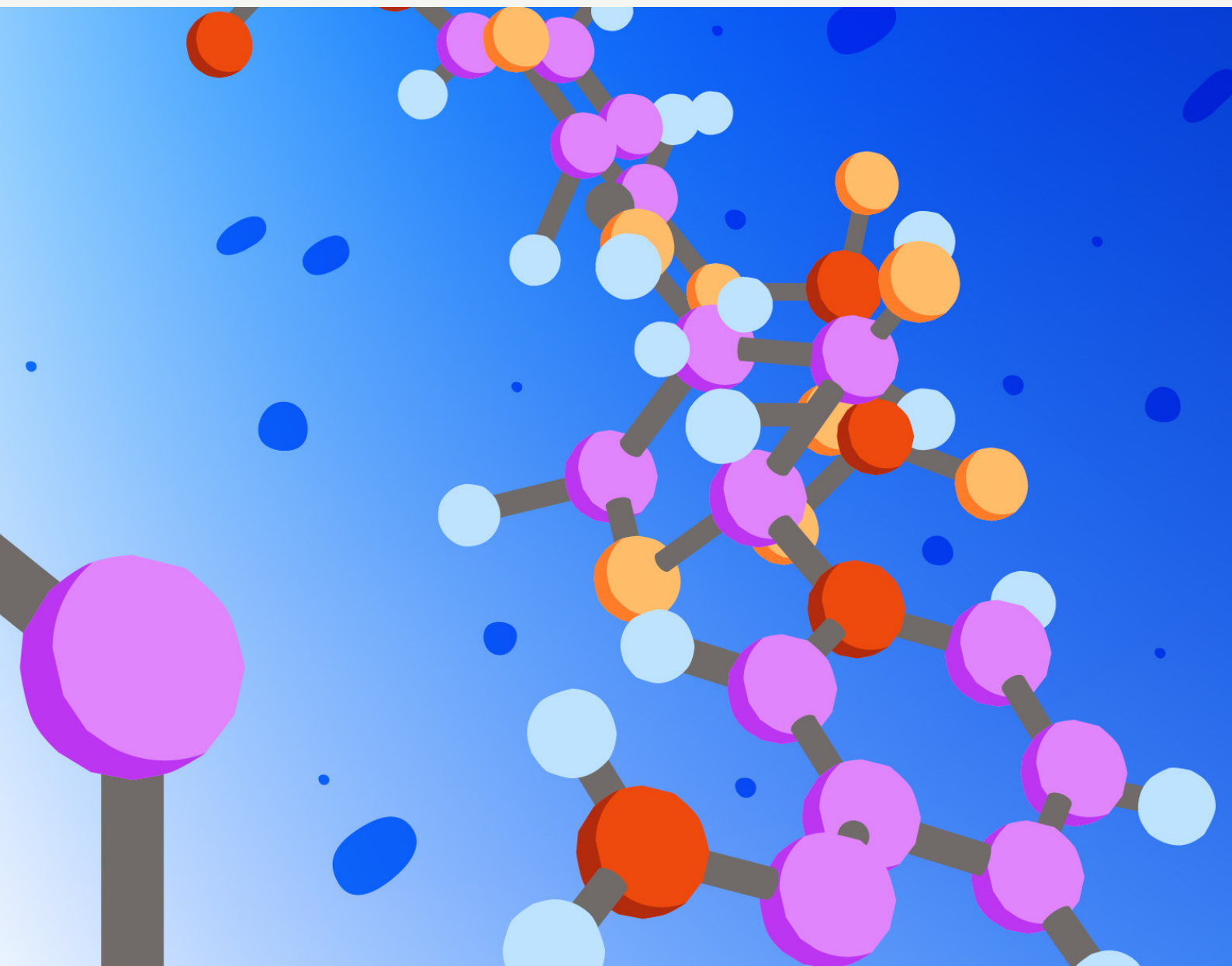


Strength in quality and innovation

Raw materials for Clinical Chemistry



Quality, expertise and reliability from one partner

Benefit from the pioneer's expertise

Proven quality and service in Diagnostics

Diagnostics companies around the globe rely on Roche raw materials for their products and services in Clinical Chemistry, and have been doing so for decades. Our assay components meet stringent standards of quality and cover the complete spectrum of reagent needs for Clinical Chemistry applications. From enzymes and substrates to cofactors and detergents, we bring industry-leading solutions that make a difference in diagnostic testing.

Beyond the excellent quality of our raw materials, however, our customers rely on us. At Roche CustomBiotech, we strive to be your single strategic partner in enabling better diagnostics with leading Clinical Chemistry solutions. Therefore, we round off our support with longstanding expertise, state-of-the-art manufacturing, production scale and filling that fit to your operations, and personal service where and when you need it.



Roche – an established pioneer in enzyme development

Discovering and tailoring enzymes to perform key reactions in diagnostic assays is a core competence of Roche innovation. The quality and performance of Roche enzymes set industry standards and some, such as α -glucosidase used in the IFCC test for pancreatic α -amylase, have been selected for reference methods. Our precise design makes it easy to incorporate our enzymes into your assays and our diverse portfolio supports a range of diagnostic applications.

Proven assay components that deliver accuracy and sensitivity

Diagnostic testing in Clinical Chemistry demands accuracy and sensitivity, which can only come from high-quality assay components. Roche expertise in researching, developing, and producing state-of-the-art components for diagnostic assays is at the core of numerous industry-leading products. And those components are available

to power your solutions. Tested for optimal affinity and compatibility, reagents in our portfolio eliminate the need for lengthy testing of less characterized reagents, saving valuable time and resources. And when new situations arise during development, our global customer support helps solve problems so your work moves forward.

Consistent performance drives reproducibility

The manufacturing of our raw materials is designed to ensure that assay components meet strict quality standards and narrow specifications in every production lot. Incorporating Roche-quality components into your Clinical Chemistry solutions ensures lot-to-lot comparability, reproducibility of assay results, and compliance with regulatory and industry standards at every production step. Furthermore, you can rely on a timely and continuous supply of components because our manufacturing is robust and our distribution reach is international.



Setting the bar high for standard Clinical Chemistry tests

Raw materials from Roche CustomBiotech transform your diagnostic application into the quality product you wish to bring to market. Find the right materials in our extensive portfolio of assay components for a range of well-established tests, including:

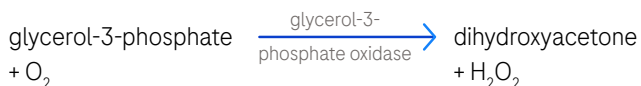
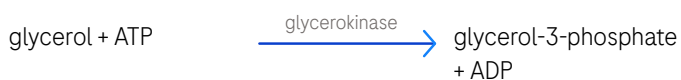
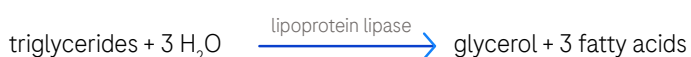
- Alkaline Phosphatase
- Alanine Aminotransferase (ALT)
- Ammonia
- Alpha-Amylase and Pancreatic Alpha-Amylase
- Aspartate Aminotransferase (AST)
- Cholesterol
- Cholinesterase
- Creatinine
- Creatine Kinase
- Creatine Kinase MB
- Ethanol
- Gamma GT
- Glucose
- Glutamate Dehydrogenase (GLDH)
- Lactate
- Lactate Dehydrogenase
- Lipase
- Triglycerides
- Urea
- Uric Acid

The right components from one partner

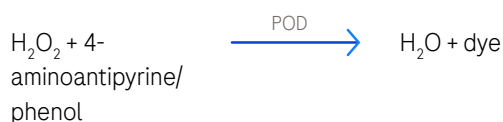
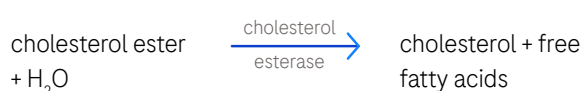
Everything for reliable triglycerides and cholesterol testing

Lipids are vital to all aspects of life, acting as hormones and energy storage, contributing to intercellular transport, and serving as key structural elements in cells. Triglycerides and cholesterol are dominant lipid forms in plasma and important markers in the diagnosis of diseases, including cerebrovascular and peripheral vascular diseases as well as metabolic disorders. Select raw materials from our extensive portfolio to design optimized diagnostic assays for triglycerides and cholesterol. The same high-quality raw materials also serve as building blocks for successful workflows in manufacturing your tests.

Triglycerides Test



Cholesterol Test



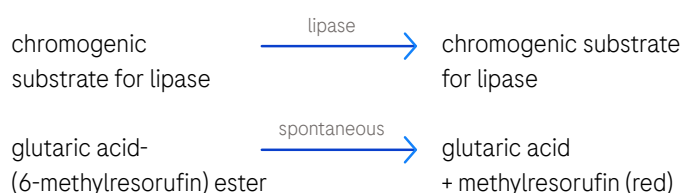
Products	Catalog Number
Lipoprotein Lipase	11 145 991 103
Glycerokinase	10 539 937 103 11 499 530 103
Glycerophosphate Oxidase	11 582 003 103
Peroxidase	11 378 783 103
ATP	10 000 116 103
FAD	10 154 032 103
PIPES	10 239 500 103
Polidocanol	10 831 620 103
Na-Cholate	10 261 084 103
Albumin	10 738 328 103

Products	Catalog Number
Cholesterol Esterase	11 641 735 103
Cholesterol Oxidase	11 479 709 103
Peroxidase	11 378 783 103
4-Aminoantipyrine	10 073 474 103
PIPES	10 239 500 103
Polidocanol	10 831 620 103
Na-Cholate	10 261 084 103

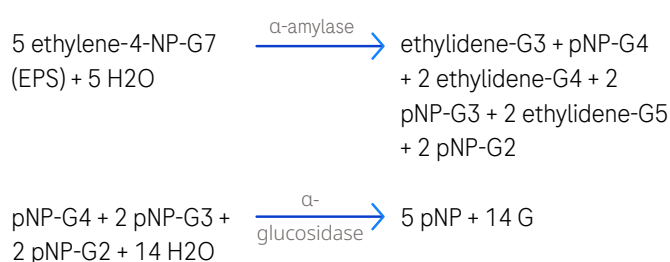
Highly sensitive detection of pancreatic α -amylase and lipaseing

Pancreatitis and pancreatic damage from diseases like cancer can lead to pancreatic insufficiency, a lifethreatening condition where the pancreas is unable to produce the digestive enzymes needed to metabolize food for absorption in the intestine. Pancreatic α -amylase and lipase are critical enzyme markers used in the diagnosis and monitoring of pancreatitis. Test sensitivity is of the essence and where our raw materials excel. Build diagnostic tests for accurate detection and measurement of both parameters using assay components that have proven to deliver the needed performance. For example, the International Federation of Clinical Chemistry and Laboratory Medicine (IFCC) uses our α -glucosidase in its reference test for pancreatic α -amylase.

Lipase Test



Pancreatic α -Amylase Test



Products	Catalog Number
Chromogenic Substrate for Lipase	11 034 618 103
Colipase	10 204 307 103
Bicine	11 525 778 103
Na-Deoxycholate	11 434 314 103
Taurodeoxycholate	11 332 686 103

Products	Catalog Number
α-Glucosidase	11 626 329 103
Ethylidene-4-NP-G7 (EPS)	10 880 078 103
Monoclonal Antibodies against Salivary α-Amylase (mouse)	11 543 598 103 11 543 601 103
4-Aminoantipyrine	10 073 474 103
HEPES	10 172 944 103
Polidocanol	10 831 620 103

The value of working with an industry-leader

Most of our raw materials and reagents were designed for existing Roche diagnostic assays. As such, they have been tested in a variety of assay configurations and reaction setups. This means that our portfolio constitutes a set of harmonized assay components that is continually expanded with new materials to address unmet needs in Clinical Chemistry. With Roche CustomBiotech raw materials, you save development time and know that your diagnostics solutions carry and deliver optimal results.

Build on our strength in quality and innovation. Partner with Roche CustomBiotech.

Regulatory disclaimer

For further processing only.

Trademarks

All product names and trademarks are the property of their respective owners.

© 2023

All rights reserved.

Published by

Roche Diagnostics GmbH
Sandhofer Str. 116
68305 Mannheim
Germany

[custombiotech.roche.com](https://www.custombiotech.roche.com)

Please contact your local CustomBiotech representative

Europe, Middle East, Africa, Latin America

mannheim.custombiotech@roche.com

United States

custombiotech.ussales@roche.com

Canada

custombiotech.can@roche.com

Asia Pacific

apac.custombiotech@roche.com